

Bitzer HSKC 7451-70Y

Specifications

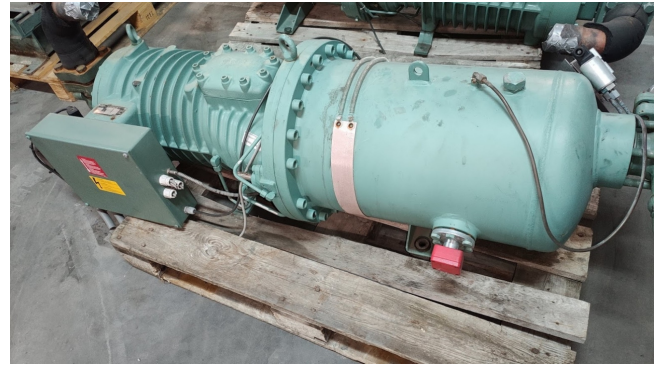
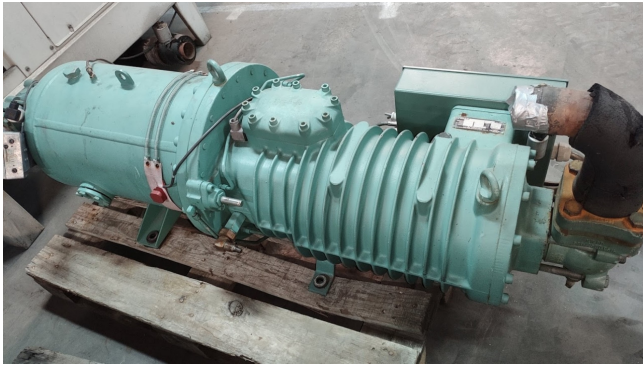
Brand	Bitzer
Type	HSKC 7451-70Y
Refrigerant	Freon
kW at 0°C/+40°C	172.72
kW at -5°C/+40°C	142.10
kW at -10°C/+40°C	115.87
kW at -20°C/+40°C	74.61
Remarks	Our capacity table is based on Manufacturer spec. We would like to know which refrigerant is in your system
Stock	1



Description

Used Bitzer HSKC 7451-70Y

Used Bitzer type HSKC 7451-70Y Semi-hermetic Screw Compressors HS. *Why choose for HOSBV? We're not only the largest used refrigeration specialist in Europe, but also, we deliver all equipment including an extensive test, warranty and industrial cleaning. *Optional we can also perform a new paint job and arrange the logistics.



input values

Compressor model	HSK7451-70	Operating mode	Standard
Refrigerant	R404A	Power supply	400V-3-50Hz
Reference temperature	Dew point temp.	Useful superheat	100%
Liq. subc. (in condenser)	0 K	Additional cooling	Automatic
Suct. gas superheat	10,00 K	Max. discharge gas temp.	80,0 °C

Result

Q [W]	Cooling capacity	mHP [kg/h]	Mass flow HP
P [kW]	Power input	Qac [kW]	Additional cooling
I [A]	Current	tsu [°C]	Liquid temp.
COEF [-]	COEFFICIENT	pm [bar(a)]	ECO pressure
mLP [kg/h]	Mass flow LP	Qsc [kW]	sub cooler capacity (ECO)

tc	to	10°C	5°C	0°C	-5°C	-10°C	-15°C	-20°C	-25°C
30°C	Q [W]	243424	202746	167632	137453	111642	89693	74611	61458
	P [kW]	39,0	39,5	40,0	40,5	40,8	40,9	41,0	41,1
	I [A]	64,4	65,2	65,9	66,6	67,0	67,2	67,3	67,4
	COEF [-]	6,24	5,13	4,19	3,40	2,74	2,19	1,78	1,45
	mLP [kg/h]	6509	5534	4676	3922	3262	2686	2181	1747
	mHP [kg/h]	6509	5534	4676	3922	3262	2686	2181	1747
	Qac [kW]	—	—	—	—	—	—	—	—
	tsu [°C]	29,6	29,6	29,6	29,6	29,6	29,6	29,6	29,6
	pm [bar(a)]	—	—	—	—	—	—	—	—
	Qsc [kW]	—	—	—	—	—	—	—	—
40°C	Q [W]	208317	172729	142104	115874	93528	74611	61458	50458
	P [kW]	50,0	50,5	50,9	51,2	51,4	51,4	51,4	51,4
	I [A]	80,5	81,3	82,0	82,4	82,6	82,6	82,6	82,6
	COEF [-]	4,17	3,42	2,79	2,26	1,82	1,45	1,15	0,92
	mLP [kg/h]	6329	5372	4530	3791	3144	2581	2111	1711
	mHP [kg/h]	6329	5372	4530	3791	3144	2581	2111	1711
	Qac [kW]	—	—	—	—	—	—	—	—
	tsu [°C]	39,6	39,6	39,6	39,6	39,6	39,6	39,6	39,6
	pm [bar(a)]	—	—	—	—	—	—	—	—
	Qsc [kW]	—	—	—	—	—	—	—	—
50°C	Q [W]	189912	139794	113964	91924	73227	61474	51474	43474
	P [kW]	64,2	64,8	65,1	65,2	65,1	64,9	64,9	64,9
			515 x 23 px			1315 x 747 px			